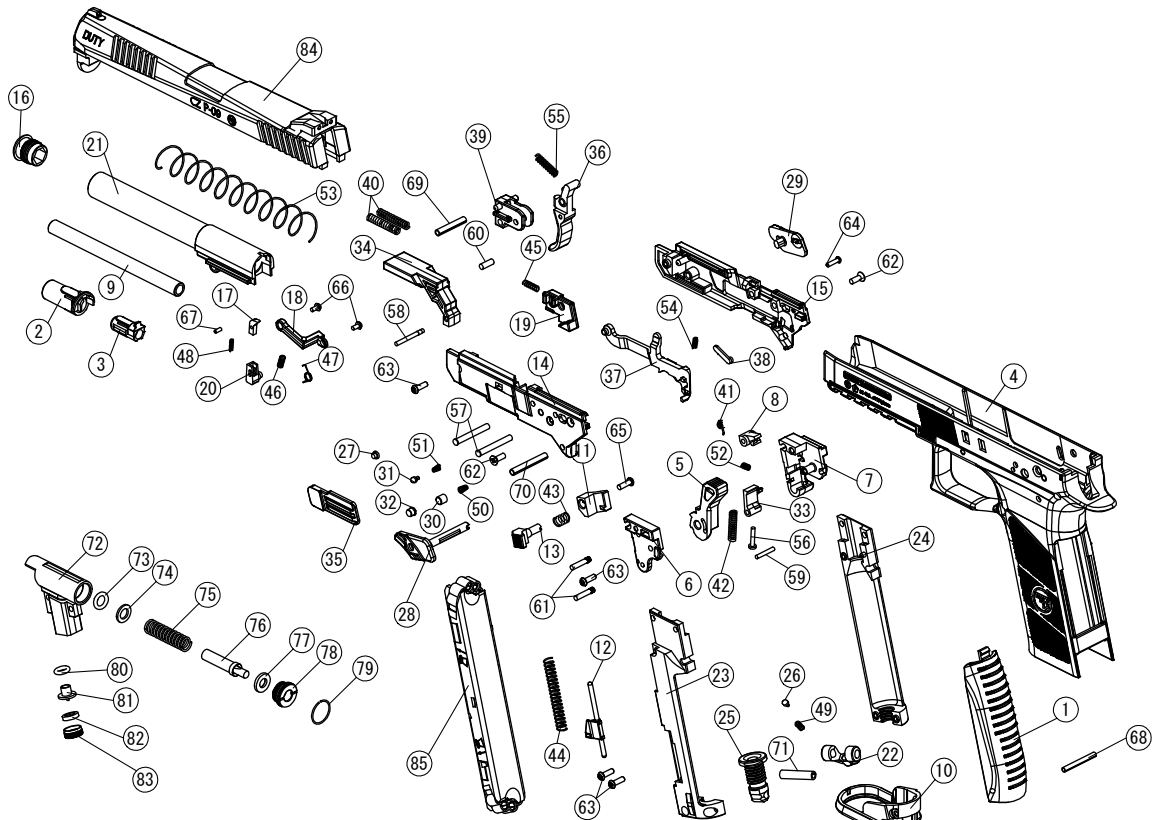


CZ P-09 Pellet Airgun - 17537



No.	Name of Parts	QTY.
1	Back Strap	1
2	Barrel Base	1
3	Chamber Sleeve	1
4	Frame	1
5	Hammer	1
6	Hammer Base Left	1
7	Hammer Base Right	1
8	Hammer Block	1
9	Inner Barrel	1
10	Magazine Bottom	1
11	Magazine Catch	1
12	Magazine Release Bar	1
13	Magazine Release Button	1
14	Mechanical Frame Left	1
15	Mechanical Frame Right	1
16	Muzzle Cap	1
17	Nail	1
18	Nail Arm	1
19	Nail Arm Lift	1
20	Nail Base	1
21	Outer Barrel	1
22	Puncture Adjuster Screw Knob	1
23	Puncture Frame Left	1
24	Puncture Frame Right	1
25	Puncture Screw	1
26	Puncture Screw Click Plunger	1
27	Red Dot	1
28	Safety Lever Left	1
29	Safety Lever Right	1
30	Safety Lock	1
31	Safety Plunger	1
32	Safety Unlock Button	1
33	Sear	1
34	Slide Block	1
35	Slide Stop	1
36	Trigger	1
37	Trigger Bar	1
38	Trigger Bar Plunger	1
39	Trigger Base	1
40	Buffer Spring	2
41	Hammer Block Spring	1
42	Hammer Spring	1
43	Magazine Catch Spring	1

No.	Name of Parts	QTY.
44	Magazine Eject Spring	1
45	Nail Arm Lift Spring	1
46	Nail Arm Spring	1
47	Nail Base Spring	1
48	Nail Spring	1
49	Puncture Screw Click Plunger Spring	1
50	Safety Lock Spring	1
51	Safety Plunger Spring	1
52	Sear Spring	1
53	Slide Return Spring	1
54	Trigger Bar Plunger Spring	1
55	Trigger Spring	1
56	Flat Head Pin $\phi 2 \times 11$ D4x1	1
57	Flat Head Pin $\phi 3 \times 23.5$ D3.5x0.5	2
58	Knurling Pin $\phi 2 \times 20$	1
59	Pin $\phi 2 \times 12.5$	1
60	Pin $\phi 3 \times 8$	1
61	Straight Knurling Pin $\phi 2.5 \times 13$	2
62	Flat Head Tap Tight Screw S-type 2.6x6	2
63	Pan Head Tap Tight Screw S-type 2.6x8	4
64	Pan Head Tap Tight Screw S-type 2x8	1
65	Pan Head Tapping Screw A-type 2.6x8	1
66	Pan Head with Collar Tap Tight Screw S-type 2x4	2
67	Spring Pin 1.5x4	1
68	Spring Pin 2.5x22	1
69	Spring Pin 3x20	1
70	Spring Pin 3x26	1
71	Spring Pin 4x20	1
72	Valve Body	1
73	O-Ring P-6 Urethane	1
74	Washer	1
75	Valve Spring	1
76	Valve Pin	1
77	Valve Seal	1
78	Valve Cap	1
79	Valve Ring	1
80	O-Ring P-5 1A	1
81	Pierce Pin	1
82	Pierce Seal	1
83	Pierce Cap	1
84	Slide Assembly	1
85	Magazine	1